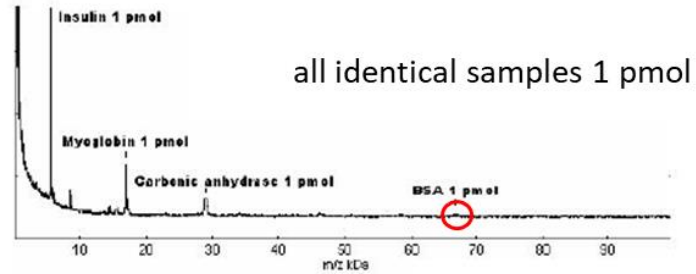
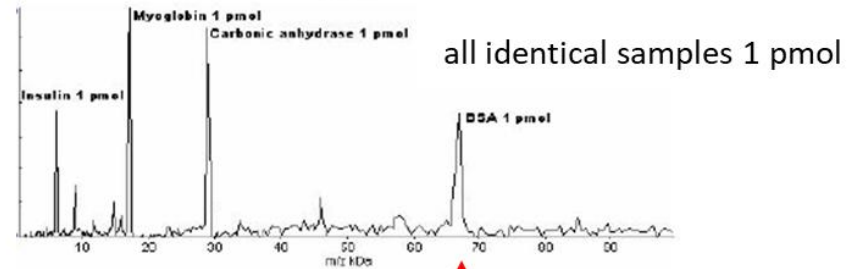
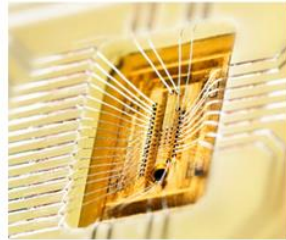


conventional ionizing detector MS



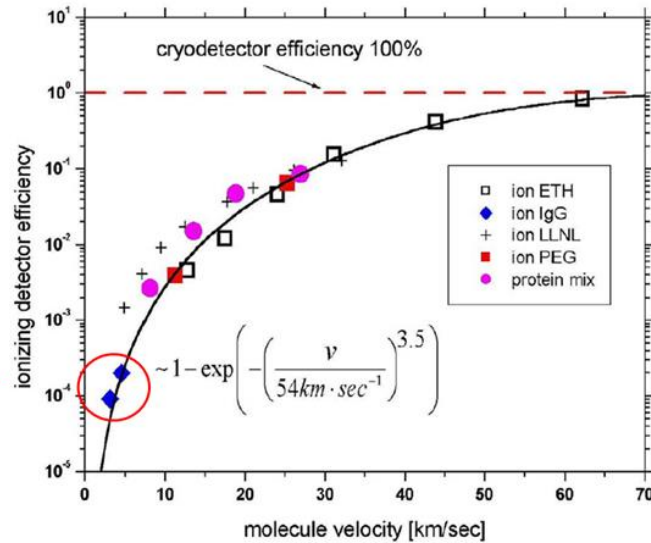
CryoDetector MS



IgG antibody  
150 kDa



$10^3$  higher  
intrinsic  
detection  
efficiency

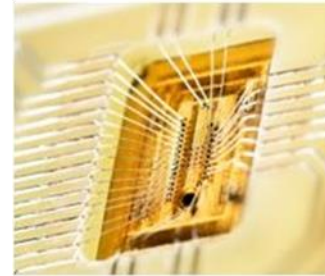


BSA protein  
66 kDa



owing to their calorimetric  
nature CryoDetectors  
have 100% intrinsic  
detection efficiency  
independent of mass

## Macromizer Cryodetector MS (2003)



16 channel  
Nb STJ-detector

In the year 2000 the Swiss company COMET Holding AG entered an agreement with the former Start-Up company GenSpec SA of D.Twerenbold to develop an industrial prototype of a CryoDetector Mass Spectrometer based on Superconducting Tunnel Junctions (STJ). Six Prototypes have been built and worked successfully. Production was stopped in 2004.