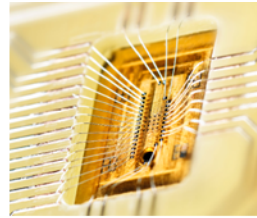
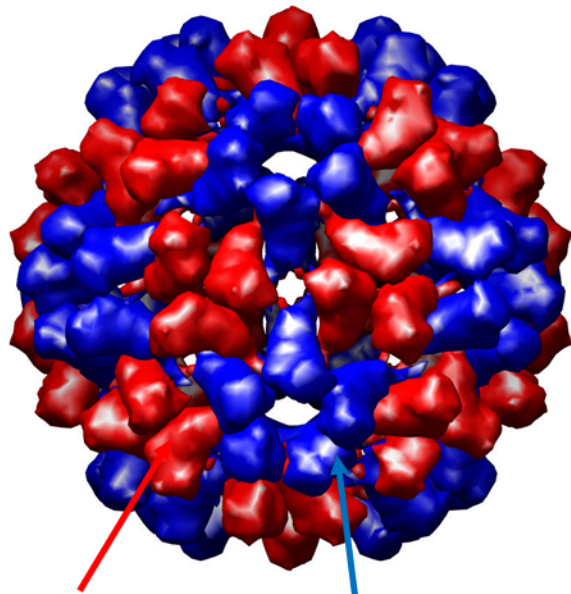


# Industrial prototype 2003



example of a virus:  
(Cowpea Chlorotic Mottle Virus )

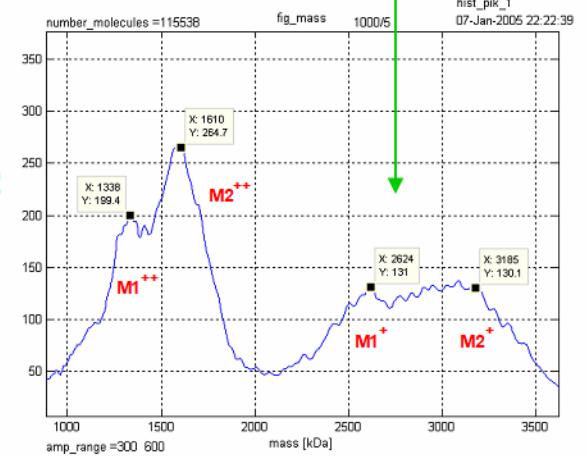
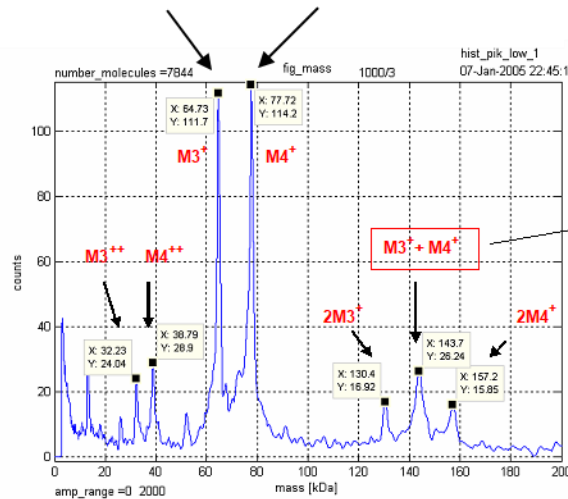


capsid protein A

capsid protein B

$M_A = 64 \text{ kDa}$        $M_B = 77 \text{ kDa}$

$M_V = 2.8 \text{ MDa}$



typically a virus capsid is a  
icosahedron (20 equilateral triangles)

$$M_V = 20 \cdot M_A + 20 \cdot M_B = 2.8 \text{ MDa}$$